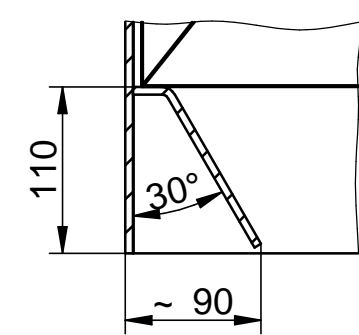
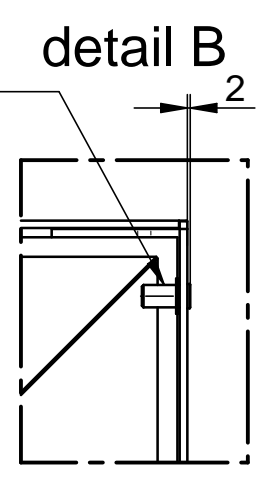


TOTAL NUMBER OF MODULES	304
MODULANZAHL	304
MATERIAL	P2650GH
MATERIAL	P265GH
SURFACE TREATMENT	NO
OBERFLÄCHENBEHANDLUNG	KEINE
COATING	NO
ANSTRICH	KEINER
WEIGHT STEEL PER MODULE	~ 214 kg
GEWICHT STAHL PRO MODUL	~ 214 kg
WEIGHT PLATE TYPE CATALYST PER MODULE	~ 736 kg
GEWICHT PLATTENKAT PRO MODUL	~ 736 kg
WEIGHT PER UNIT CATALYST & MODULE	~ 950 kg
GEWICHT KAT. & MODUL	~ 950 kg
TOTAL WEIGHT UNIT CATALYST & MODULE	~ 288.800 kg
GEWICHT SUMME KAT. & MODUL	~ 288.800 kg

section A-A

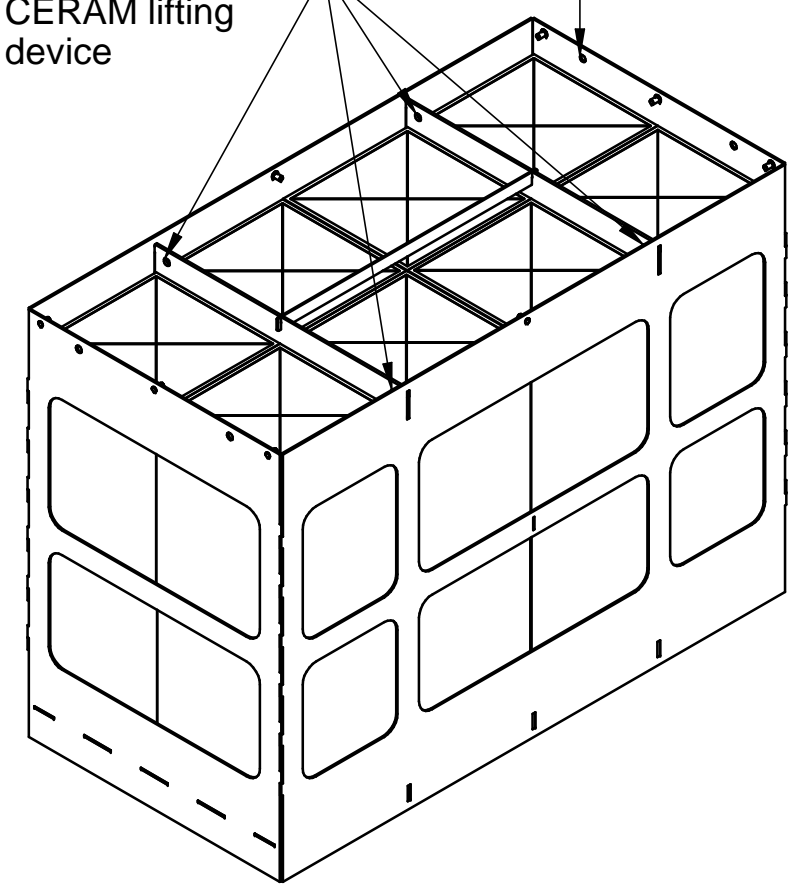


Support pin for removeable cover grate (typ. @ 8 places)




Lifting lugs for ALSTOM lifting device (typ. @ 4 places)

Lifting lugs for CERAM lifting device




Employer's and Contractor's Information / Project Name




Skupina **hse**

TERMoeLEKTRARNA
ŠOŠTANJ



Holding Slovenske elektrarne d.o.o.




ŠOŠTANJ Unit 6
1 x 600 MW - Power Island
Slovenia

Space for Stamping (Review and Validation status - if needed)

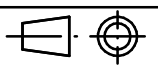
Revision History					
Rev.	Revision Date	Created by	Checked by	Approved by	Description
00	06.12.2013	G. Poelzl	M. Schweiger	M. Aumann	First issue

Participant



ALSTOM Boller Deutschland GmbH
Branch Stuttgart

Scale 1:10



Other Document Code (If any)

Responsible dept. Productmanagement

Created by G. Poelzl

Checked by M. Schweiger

Approved by M. Aumann

Format A2

Originator

Document Type Equipment Detail Drawing

Project Document Code STJ/06/B/-----00872/DD/311

Title, Subtitle

Document Status Released

Identification number 1.48315/00 872-0311

Rev. 00

Date 06.12.2013

Lang. EN

Sheet 1/1

Plate Type Catalyst Module

© ALSTOM 2012. All rights reserved.

Please consider the environment before printing this document